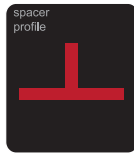


product range



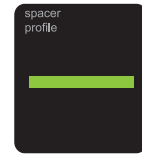
mandrel



2mm & 3mm
spacer CROSS



2mm & 3mm
spacer EDGE



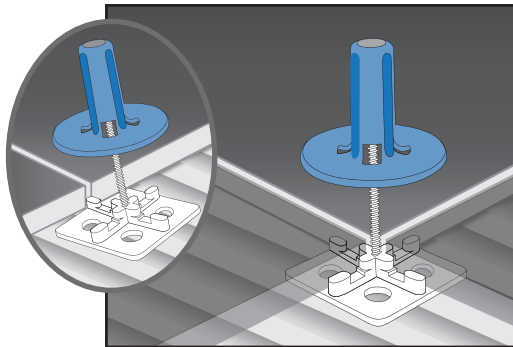
2mm & 3mm
spacer "T"



quickturn
socket

-Lévl™ CROSS spacers are used at the intersecting corner of 4 tiles. -Lévl™ EDGE spacers are used where only 2 tiles intersect. -Lévl™ "T" spacers are used in offset pattern installation patterns.

spread mortar + install spacer



Spread tile mortar onto tile-ready substrate using a trowel size appropriate for the specific tile format.

The use of a levelling system requires a trowel notch larger than usual. Consult mortar manufacturer for trowel size requirements.

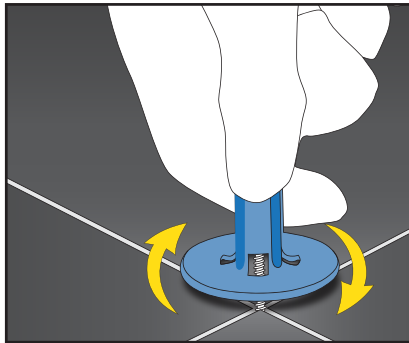
Ensure full mortar coverage below the tile, thus back buttering the tile is required.

Thread Lévl™ mandrel into Lévl™ spacer .
Ensure screw threads fully into spacer base.

Slide an assembled Lévl™ spacer under the freshly laid tile

Align surrounding tiles to the Lévl™ spacer tabs

tighten mandrel

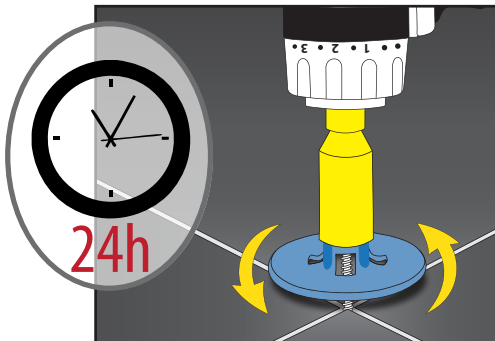


With mortar still fresh, turn Lévl™ mandrel clockwise to level tiles.

It can help to gently tap the tile while tightening the Lévl™ mandrel.
Do not overtighten or you may strip the threads.

Alternatly, you can use a cordless drill with a Lévl™ quickturn socket to tighten the spacers.
This will require the use of a cordless drill with the clutch set to the lowest setting.

remove mandrel



Once mortar has cured according to manufacturer's guidelines, remove Lévl™ mandrel by turning counter clockwise, either by hand or with Lévl™ quickturn.