

Mixing Valve and Pipe Seal

 **Warning:**



**DO NOT
use with
überseal™ sealant!**

**Use only with Modified
Thinset Mortar!**

Installation Manual

Contents:
Section 1MVPS
Waterproof Showers

Required materials:



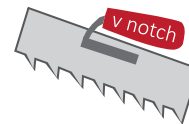
Mixing Valve &
Pipe Seal



Regular Showers:
ANSI A118.4 or A118.15
Thinset

Intermittent Steam Showers:
ISO 13007 C2TES2
Thinset

Required tools:



1/4"x3/16"
V-Notched Trowel



Flat Trowel



WWW.UBERTILE.COM

The information pertained within this guide is for reference only and does not supersede instructions from other product manufacturers or building codes.

Always consult and follow manufacturers specific installation and safety instructions BEFORE installing any products.

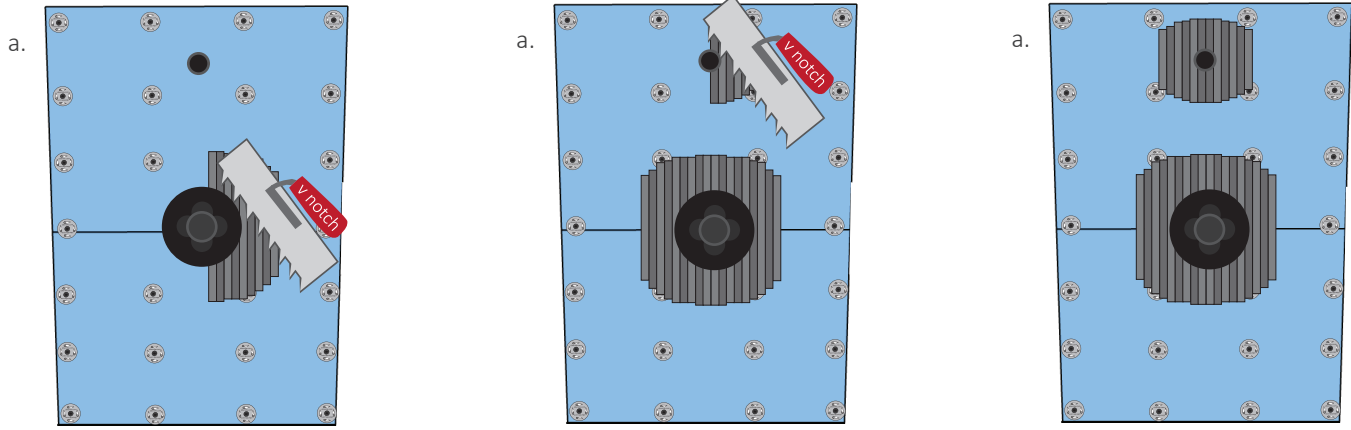
übertile™ bears no responsibility or liability for damage(s) resulting from the contents contained within this manual.

Information may change without notice. Visit www.ubertile.com for most current revision.

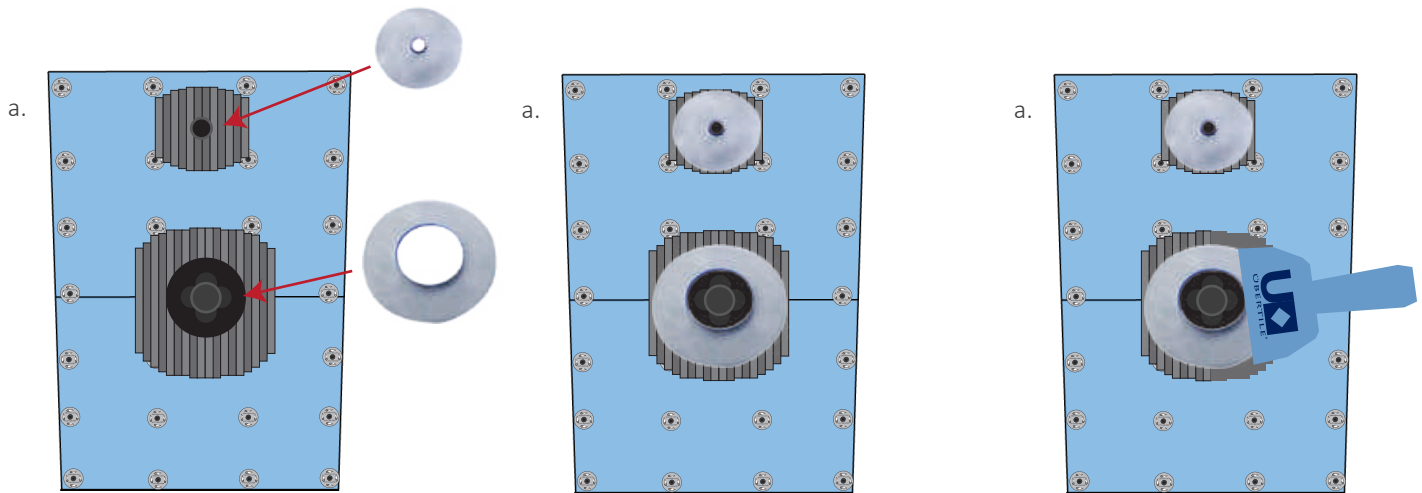
All tasks performed by the product user are at the own risk and liability of the user.



Installation - Mixing Valve & Pipe Seal

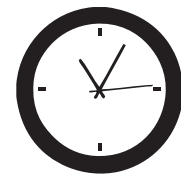
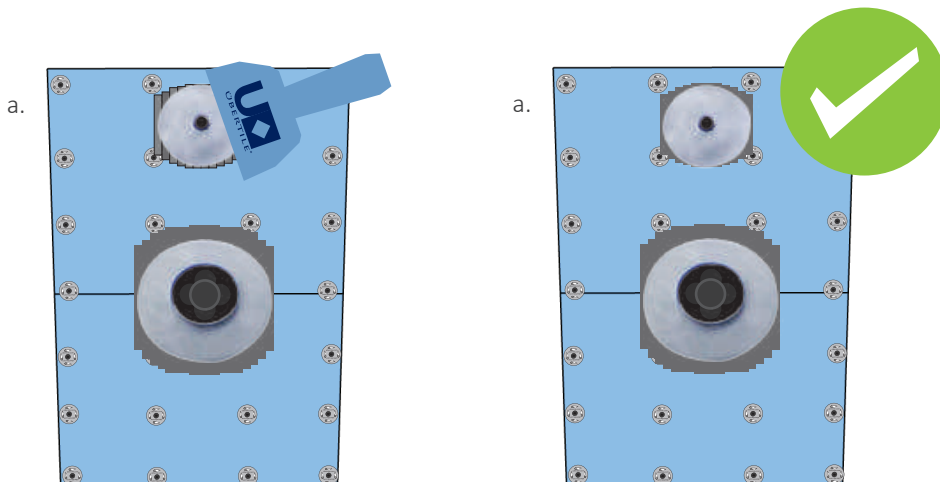


Spread **modified thinset** onto the **Uberboard™** panels, where the **Mixing Valve & Pipe Seal** will be installed, using a **1/4"x3/16" V-Notched Trowel**.



With the **thinset** still fresh, install the **Mixing Valve & Pipe Seal**, ensuring the deeper protruding side of the seals facing **INWARDS** into the hole.

With the **thinset** still fresh, use a **flat trowel** to flatten out the **thinset**.



Tiling can begin immediately.